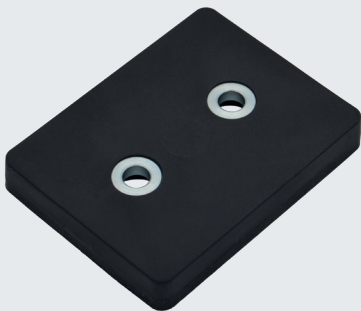


Applications

Magnetic solutions for building installations



Fastening solutions are our expertise.



Suspension of noise protection elements

Advances in technology are enabling innovative magnetic solutions that improve the quality and performance of building installations.

From the simple laying of cables, devices for communication systems, loudspeakers and other electrical installations to holding flaps and doors - magnetic applications offer numerous advantages for building installations. Even on sensitive surfaces, installations can be securely fastened using rubberized magnetic systems.

Magnets and magnet systems in building installations for industrial buildings:

Building installations for production halls require special solutions to meet the demanding requirements. Magnetic applications are playing an increasingly important role in supporting various functions and making operations more efficient.

Magnetic systems offer flexible installation and enable quick changes to existing installations. They are used in a wide variety of areas, such as electrical supply with cables, wires and control cabinets, special lighting systems, communication systems, air conditioning and ventilation as well as security systems.



Discover the wide range of magnetic applications we can offer for industrial building installations:

- Magnetic suspension of continuous rooflights
- Fastening of sound insulation
- Fastening cables, cable ducts and lines or fire alarm systems
- Attachment of fuse boxes / control boxes
- Magnetic holders for fire extinguishers, cameras and motion detectors
- Mounting for assembly workstations
- Blowers and air conditioning ceilings
- Media supply such as compressed air etc.
- Magnetically attachable partition walls / privacy screens
- Machine enclosures / inspection flaps or inspection openings
- Attaching light barriers
- Personnel guidance systems (magnetic)

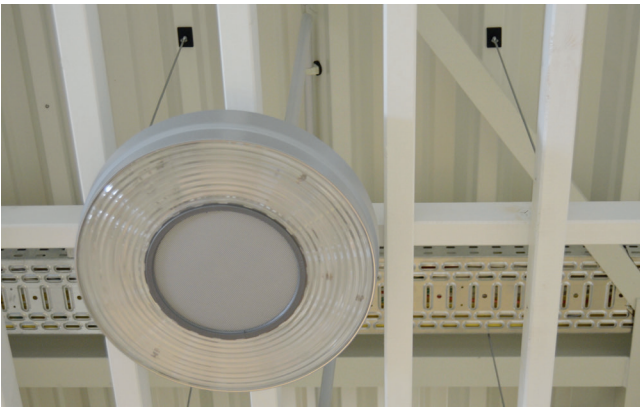
Magnetized by ideas - fascinated by possibilities.



Fastening pipes directly to steel beams



Fastening junction boxes magnetically



Fastening lights or ceiling elements



Mounting of fire extinguishers etc. directly on the steel girder



Fasten cable ducts magnetically



Magnetic pipe installation on the ceiling



Suspending lights from the ceiling



Fastening switch cabinets or sockets magnetically